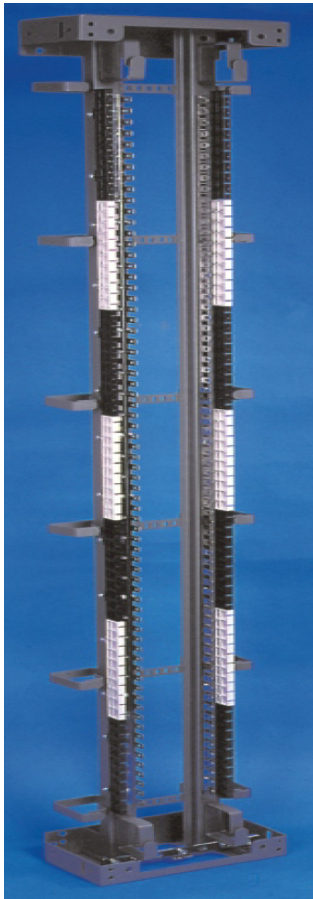


Telephone Distribution Frame – 690 Pair



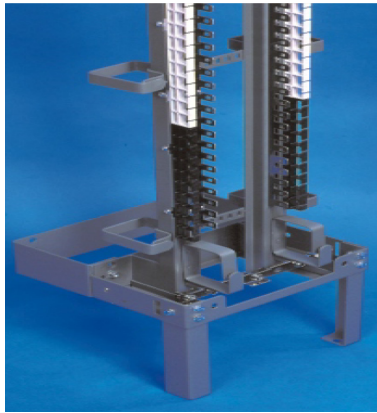
Distribution frame fitted with front and side covers

Product Introduction:

Techlogiks 690 Pair Distribution Frame is a single vertical, modular distribution frame offering ease of transport and flexibility of installation. The modular construction of the distribution frame means that any size of installation can be equipped using a standard building block. Single verticals can be joined side by side for wall mounting or back-to-back to for a free-standing system.

For uneven floors the standard legs are adjustable. If height reduction is required, the legs can be removed and the distribution frame mounted directly on the floor giving an overall height of just 1850mm.

Each single vertical has a capacity of 69 x 10 pair IDC connector strips. Integral colour coded fanning strips allow quick and easy pair location.



Detail of standard feet & jumper rings plus optional stand off kit

Optional Accessories:

- Lockable front covers are available for enclosed and security applications.
- Side covers are supplied in pairs and are secured by the front cover.
- Wall spacer brackets provide secure fixing for wall mounting applications.
- For larger installations, the standard horizontal "C" jumper rings can be replaced by a deeper(140mm) set giving greater capacity. (NB: Not compatible with front covers).
- For free-standing applications, the Plinth 1A allows two verticals to be bolted side by side rather than the usual back-to-back configuration.
- When using this frame with raised (computer) floors, longer legs are available which will transfer the loading.

Dimensions

	Height	Width	Depth
With legs	2150mm	280mm	150mm
Without legs	1995mm	280mm	150mm

Ordering Information

Part Number	Description
TL-DF-690	690 Pair Telephone Distribution Frame