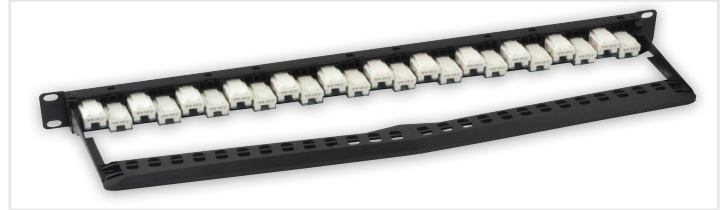


### Category 6A Unshielded Patch Panel

Techlogiks Cat 6A unshielded patch panel is suitable for unshielded keystone jack and coupler & snap-in or snap-out easily. Its unique contact alignment reduces on alien crosstalk from each connector and enhance the better performance. Compatible for 24-port applications in 1 Unit Height.



#### Applications

- 10GBASE-T, 1000BASE-T, 100BASE-Tx, 10BASE-T, 155M ATM, 4/16MB Token Ring.
- 100Mbps TP-PMD, ISDN, ADSL, Analog & Digital Voice (VoIP) / Video.
- Power over Ethernet (PoE), Control Signal.

#### Standards

- Lead-free & RoHS2 compliant.
- ANSI/TIA-568-C.2, ANSI/TIA-1096-A (FCC Part 68), ISO/IEC 11801 2nd edition and CENELEC EN 50173-1.

#### Specifications

Front Panel	SPCC, Black powder coating finish
Bracket	High-impact Nylon PA-66 + Glass fiber filled, UL 94 V-0 rated
Cable Manager	SECC, Plated with Zinc, Black powder coating finish
Frame/Housing	High-impact Acrylonitrile butadiene styrene (ABS resin), UL 94 V-0 rated
Cap	High impact Polycarbonate ( PC resin), UL 94 V-2 rated, transparent black
Jack Contacts	5100W spring temper phosphor bronze, plated with gold over nickel under plate.
PCB	FR4, UL 94 V-0 rated
IDC Terminals	C5191R-H phosphorous bronze plated with tin over nickel under plate.
IDC Block	High impact Polycarbonate (PC resin), UL 94 V-0 rated, RoHS compliant.
Conductor Diameters	24 AWG – 22 AWG
Insulation Diameters	0.8mm – 1.0mm
Cable Diameters	5mm – 9mm

#### Electrical Characteristics

Voltage proof	1000V DC or AC peak.
Current-carrying capacity	0.75Amps minimum
Contact resistance	20mohm maximum
Insulation resistance	500Mohm minimum at 100V DC
Input to output resistance	200mohm maximum
DC resistance	0.2ohm maximum

#### Mechanical Characteristics

Mechanical operation	750 cycles min. for insertion / withdrawal with modular plug. 20 cycles min. for cable re-termination.
Effectiveness of connector coupling devices	50N (11lbf) for 60s ± 5s.

#### Environmental Characteristics

Temperature	-10°C ~ 60°C
Humidity	10% ~ 90%RH

#### ORDERING INFORMATION

PART NUMBER	DESCRIPTION
TL-PNC6A-UT24M	1U 24 Ports Cat 6A Unshielded Patch Panel
TL-PNC6A-UT48M	2U 48 Ports Cat 6A Unshielded Patch Panel