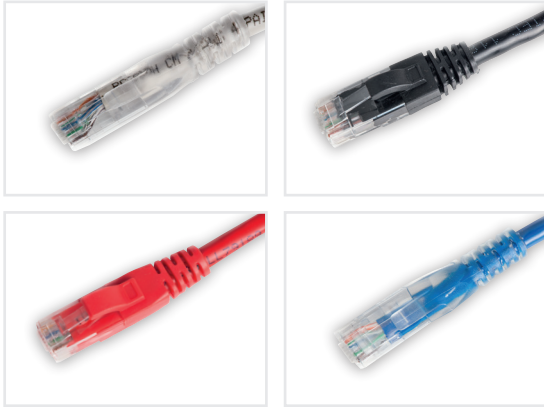


Cat 5e Unshielded Patch Cords

Techlogiks Cat 5e unshielded patch cords made of high performance UTP components available in broad range of lengths and easy to trace colours. They are designed to meet or exceed all Cat 5e specifications. It has 24 AWG conductor securely mated with RJ45 plug design to deliver superior electrical performance with excellent repeatability. The unique anti-snagging feature simplifies removal and replacement of patch cords.



Features:-

- Unique design of Cat6 RJ45 modular plugs and line pair decrease cross talk and increase allowance.
- Excellent attenuation and crosstalk continuity
- Meet or exceed the requirement of Cat5e UTP system
- T568A AND T568B wiring schemes.
- Lead-free & RoHS2 compliant.
- ANSI/TIA-568-C.2, ANSI/TIA-1096-A (FCC Part 68), ISO/IEC 11801 2nd edition and CENELEC EN 50173-1

COPPER PATCH CORDS

Electrical Characteristics	
Dielectric strength	1,000V RMS 60Hz/1min
Voltage Class Max.	150VAC
Rated current Max.	1.5A
Insulation resistance Min.	500 Megohm
Contact resistance Max.	10 milliohm

Physical Characteristics	
Conductor	24 AWG bare copper
Insulation material	PE
Structure	4 twisted pair, Cross filler
Cable Jacket	PVC or LSZH
Plug Housing	Polycarbonate
Contact Blades	Phosphor bronze with gold plating

Environmental Characteristics	
Temperature	-10°C ~ 60°C
Humidity	10% ~ 90%RH

Mechanical Characteristics	
Durability	1000 plugging
Nominal outer diameter	5.6mm
Minimum bending radius	22.4m

ORDERING INFORMATION	
PART NUMBER	DESCRIPTION
TL-PCC5E-UH1GY	Cat 5e Unshielded Patch Cord 1 Meter, PVC
TL-PCC5E-UHLZ1GY	Cat 5e Unshielded Patch Cord 1 Meter, LSZH
TL-PCC5E-UHXXYY*	Cat 5e Unshielded Patch Cord, PVC
TL-PCC5E-UHLZXXYY*	Cat 5e Unshielded Patch Cord, LSZH

*XX - 01, 02,03 Meters etc. YY- GY, RD, BL, GR, WH, YL.