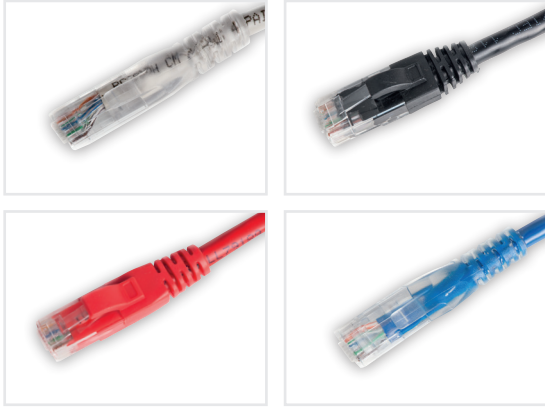


Cat 6 Unshielded Patch Cords

Techlogiks Cat 6 unshielded patch cords, made of high performance UTP components available in broad range of lengths and easy to trace colours. They are designed to meet or exceed all Cat6 specifications. It has 24 AWG conductor securely mated with a patented RJ45 plug design to deliver superior electrical performance with excellent repeatability. The unique anti-snagging feature simplifies removal and replacement of patch cords.



Features:-

- *Unique design of Cat6 RJ45 modular plugs and line pair decrease cross talk and increase allowance.*
- *Excellent attenuation and crosstalk continuity*
- *Meet or exceed the requirement of Cat6 UTP system*
- *Lead-free & RoHS2 compliant.*
- *Level A reliability requirements of IEC 60603-7-2 and IEC 60603-7-4 for RJ45.*
- *Compatible for T568A and T568B wiring schemes.*

Electrical Characteristics	
Current Rating	1.5 Amp
Insulation Resistance	500 Megohm min.
Contact Resistance	20 Milli-ohm max
Dielectric Strength	1000 VAC (RMS)
Voltage	30 VAC max.

Physical Characteristics	
Conductor	24 AWG bare copper
Insulation material	PE
Structure	4 twisted pair, Cross filler
Cable Jacket	PVC or LSZH
Plug Housing	Polycarbonate
Contact Blades	Phosphor bronze with 50µ" gold plating

Environmental Characteristics	
Temperature	-10°C ~ 60°C
Humidity	10% ~ 90%RH

Mechanical Characteristics	
Durability	1000 plugging
Nominal outer diameter	5.6mm
Minimum bending radius	22.4m

ORDERING INFORMATION	
PART NUMBER	DESCRIPTION
TL-PCC6-UH1GY	Cat 6 Unshielded Patch Cord. 1 Meter, PVC
TL-PCC6-UHLZ1GY	Cat 6 Unshielded Patch Cord. 1 Meter, LSZH
TL-PCC6-UHXXYY*	Cat 6 Unshielded Patch Cord. PVC
TL-PCC6-UHLZXXYY*	Cat 6 Unshielded Patch Cord. LSZH
* XX-01, 02, 03 Meters etc.... YY-GY, RD, BL, GR, WH, YL.	

COPPER PATCH CORDS