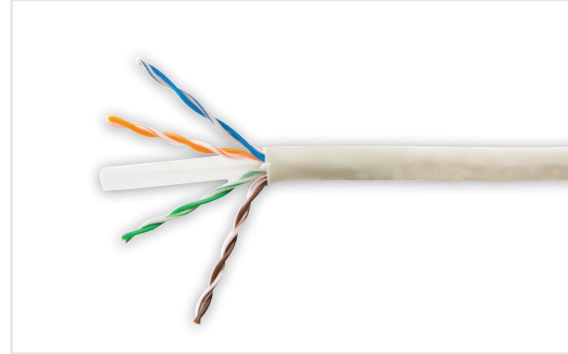
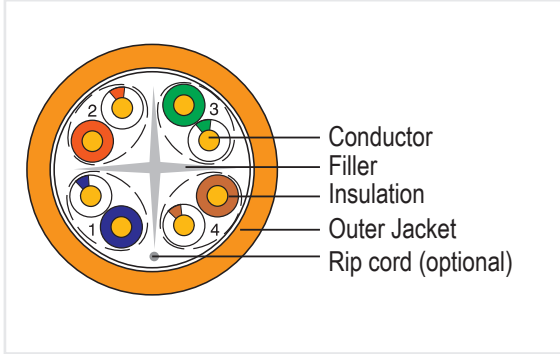


### Category 6A UTP Cable

Techlogiks Cat 6A UTP solid cable in a 23 AWG conductor features more stringent specifications for crosstalk and system noise. The cable standard provides performance of up to 500 MHz and applies to 10 GBase-T, 1000Base-T, 1000Base-TX, 100 Base-T4, 100Base-TX, 100VG-AnyLAN, 155Mbps ATM, 622Mbps ATM.



### Standards

UL Subject 444, EIA/TIA 568B.2-10 & ISO/IEC 11801, IEC 61156

Construction		
Structure	Construction	UTP
	Number of Pairs	4 Pair
	AWG	23AWG
	Conductor Dimension (mm)	0.585
	Solid or Stranded; Bare or Tinned	Solid Copper
Insulation	insulation material	HDPE
	Insulation Dimension [mm]	0.98
	Number Colour (Ring or Strip marking)	1.White/Blue & Blue 2.White/Orange & Orange 3.White/Green & Green 4.White/Brown & Brown
Outer Jacket	Cross Filler	Yes
	Outer Jacket Material	PVC or LSZH
	Overall Nominal Diameter (mm)	Nom:6 mm

Electrical Characteristics	
Nam. Mutual Capacitance @ kHz	≤5.6 nF/100M
Max. Capacitance unbalance (pF/ 100m)	≤330pF /100M(Per TIA/EIA-568B.2)
	≤160pF /100M(Per IEC 61156)
Nominal Velocity of Propagation	65%
Max. Delay Skew (ns/100m)	≤45ns/100M
Max. Conductor DC Resistance @ 20 Deg. C	8.76Ω /100M (Bare Copper)
	9.09Ω /100M (Tinned Copper)
Max. DC Resistance unbalance @ 20 Deg. C	≤5%(per TIA/EIA-568B.2)
	≤2%(per IEC 61156-5)

CAT 6A CABLE



Mechanical Characteristics	
Operating Temp. Range	-20~70°C
Max. Recommended Pulling Tension	110N
Min. Bend Radius (Install)	4 x O.D.
Flame Test	CMR

TIA/EIA 568-B.2 Electrical Characteristics											
Frequency	Input Impedance	Attenuation	Return Loss	NEXT	PSNEXT	ELFEXT	PSELFEXT	TCL	PD	PSAN-EXT	PSACCRF
(MHz)	Ohms	dB/100m	dB	dB	dB	dB/100m	Db/100m	Db	Ns/100m	Db	Db
4	100±15	3.8	18.8	63.3	63.3	55.8	52.8	40	552.0	67	66.2
8	100±15	5.3	19.7	58.8	58.8	49.7	46.7	40	546.7	67	60.1
10	100±15	5.9	20	57.3	57.3	47.8	44.8	40	545.4	67	58.2
16	100±15	7.6	20	54.2	54.2	43.7	40.7	38	543.0	67	54.1
20	100±15	8.4	20	52.8	52.8	41.8	38.8	37	542.0	67	52.2
25	100±15	9.4	19.3	51.3	51.3	39.8	36.8	36	541.2	67	50.2
31.25	100±15	10.5	18.6	50	49	37.9	34.9	35.1	540.4	67	48.3
62.5	100±15	15	16.5	45.4	45.4	31.9	28.9	32	538.6	65.6	42.3
100	100±15	19.1	15.1	42.3	42.3	27.8	24.8	30	537.6	62.5	38.2
125	100±20	20	14.4	40.8	40.8	25.9	22.9	29	537.2	61	36.3
200	100±22	22	13	37.8	37.8	21.8	18.8	27	536.5	58	32.2
250	100±22	22	12.3	36.3	36.3	19.8	16.8	26	536.3	56.5	30.2
300	100±25	34.3	11.8	35.1	35.1	18.3	15.3	25.2	536.1	55.3	28.7
400	100±25	40.1	10.9	33.3	33.3	15.8	12.8	24	535.8	53.5	26.2
500	100±25	45.3	10.2	31.8	31.8	13.8	10.8	23	535.6	52	24.2

ORDERING INFORMATION	
PART NUMBER	DESCRIPTION
TL-BULKUTPC6A	Unshielded Twisted Pair Category 6A Cable, 23 AWG, 305 Meters PVC
TL-BULKUTPC6ALZ	Unshielded Twisted Pair Category 6A Cable, 23 AWG, 305 Meters LSZH

CAT 6A CABLE