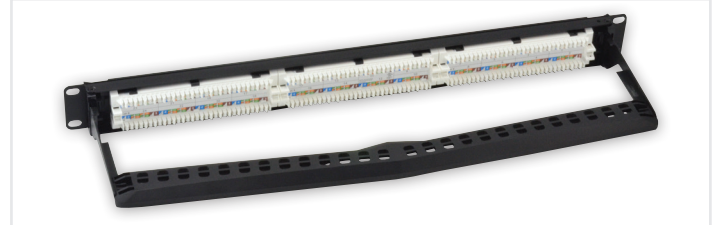
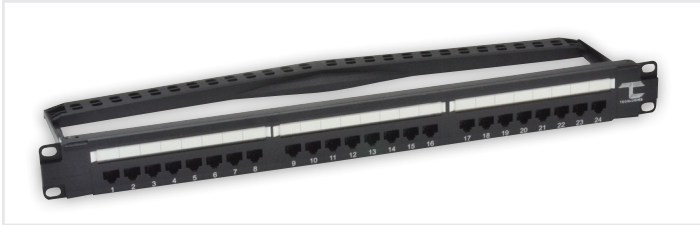


Category 6 Unshielded Patch Panel

Techlogiks Cat 6 modular patch panel utilizes quad frame modules offered with 8-contact inserts wired to Insulation Displacement Connectors (IDC). Fully automatic press-fit production of PCB assembly to ensure consistency quality and complies with international standards.



Applications

- 1000BASE-T, 100BASE-Tx, 10BASE-T, 155M ATM, 4/16MB Token Ring.
- 100Mbps TP-PMD, ISDN, ADSL, Analog & Digital Voice (VoIP) / Video.
- Power over Ethernet (PoE), Control Signal.

Standards

- Lead-free & RoHS2 compliant.
- ANSI/TIA-568-C.2, ANSI/TIA-1096-A (FCC Part 68), ISO/IEC 11801 2nd edition and CENELEC EN 50173-1.
- Level A reliability requirements of IEC 60603-7-2 and IEC 60603-7-4 for RJ45.
- Compatible for T568A and T568B wiring schemes.

Specifications

Panel/Hanger	SECC with zinc undercoat, black powder coating finish
Cable Manager	High-Impact Nylon PA 66, 30% glass fiber filled, UL 94 V-0 rated
Frame	High-impact Acrylonitrile Butadiene Styrene (ABS resin), UL 94 V-0 rated
Jack Contacts	5100W spring temper phosphor bronze round wire, plated with Au/PdNi over nickel under plate.
Contact Holder	High-impact ABS resin+Polycarbonate (PC resin). UL94 V-0 rated
IDC Terminals	C5191R H phosphor bronze, plated with nickel.
IDC Block	High impact Polycarbonate (PC resin), UL 94 V-0 rated, RoHS 2 compliant.
Conductor Diameters	24 AWG – 22 AWG
Insulation Diameters	0.8mm – 1.0mm
Cable Diameters	5mm – 9mm

Electrical Characteristics

Voltage proof	1000V DC or AC peak.
Current-carrying capacity	0.75Amps minimum
Contact resistance	20mohm maximum
Insulation resistance	500Mohm minimum at 100V DC
Input to output resistance	200mohm maximum
DC resistance	0.2ohm maximum

Mechanical Characteristics

Mechanical operation	750 cycles min. for insertion / withdrawal with modular plug. 20 cycles min. for cable re-termination.
Effectiveness of connector coupling devices	50N (11lbf) for 60s ± 5s.

Environmental Characteristics

Temperature	-10°C ~ 60°C
Humidity	10% ~ 90%RH

ORDERING INFORMATION

PART NUMBER	DESCRIPTION
TL-PNC6-UT24M	1U 24 Ports Cat 6 Unshielded Patch Panel
TL-PNC6-UT48M	2U 48 Ports Cat 6 Unshielded Patch Panel