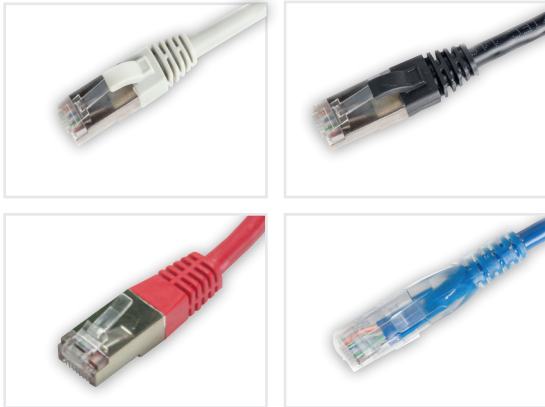


Category 6 Shielded Patch Cord

Techlogiks Cat 6 shielded patch cords made of high performance components, available in broad range of lengths and easy to trace colours. They are designed to meet or exceed all Cat 6 specifications. It has 24 AWG conductor securely mated with RJ45 plug design to deliver superior electrical performance with excellent repeatability. Patch cords are assemblies of 4 twisted-pair stranded wire cables with modular plugs crimped on both ends. T568A and T568B wiring schemes are both available.



Features:-

- Unique design of Cat6 RJ45 modular plugs and line pair decrease cross talk and increase allowance.
- Excellent attenuation and crosstalk continuity
- Meet or exceed the requirement of Cat6 UTP system
- Lead-free & RoHS2 compliant.
- Level A reliability requirements of IEC 60603-7-2 and IEC 60603-7-4 for RJ45.
- Compatible for T568A and T568B wiring schemes.

Electrical Characteristics	
Current Rating	1.5 Amp
Insulation Resistance	500 Megohm min.
Contact Resistance	20 Milli-ohm max
Dielectric Strength	1000 VAC (RMS)
Voltage	30 VAC max.

Physical Characteristics	
Conductor	24 AWG bare copper
Insulation material	PE
Outer Shield	AL Foil
Structure	4 twisted pair, Cross filler
Cable Jacket	PVC or LSZH
Plug Housing	Polycarbonate
Contact Blades	Phosphor bronze with 50µ" gold plating

Environmental Characteristics	
Temperature	-10°C ~ 60°C
Humidity	10% ~ 90%RH

Mechanical Characteristics	
Insertion life	750 mating cycles
Pull Force	20 lbs (89N)

ORDERING INFORMATION	
PART NUMBER	DESCRIPTION
TL-PCC6-SH1GY	Cat 6 Shielded Patch Cord. 1 Meter, PVC
TL-PCC6-SHLZ1GY	Cat 6 Shielded Patch Cord. 1 Meter, LSZH
TL-PCC6-SHXXYY*	Cat 6 Shielded Patch Cord. PVC
TL-PCC6-SHLZXXYY*	Cat 6 Shielded Patch Cord. LSZH
* XX-01, 02, 03 Meters etc.... YY-GY, RD, BL, GR, WH, YL.	

COPPER PATCH CORDS