

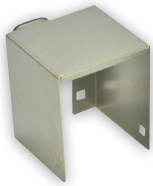
Category 6 Shielded Keystone Jack

Techlogiks Cat 6 Shielded keystone Jack is designed to easily snap in and out of the wall outlet, patch panel and surface mount box. It is individually terminated using Insulation Displacement Connectors (IDC) with punch down tool for quick installation.



Applications

- 1000BASE-T, 100BASE-Tx, 10BASE-T, 155M ATM, 4/16MB Token Ring.
- 100Mbps TP-PMD, ISDN, ADSL, Analog & Digital Voice (VoIP) / Video.
- Power over Ethernet (PoE), Control Signal.



Standards

- Lead-free & RoHS2 compliant.
- ANSI/TIA-568-C.2, ANSI/TIA-1096-A (FCC Part 68), ISO/IEC 11801 2nd edition and CENELEC EN 50173-1.
- Level A reliability requirements of IEC 60603-7-2 and IEC 60603-7-4 for RJ45.
- Compatible for T568A and T568B wiring schemes.

Specifications

Specifications	
Overall Shield	Phosphor Bronze C5191R-H
Housing	High impact Acrylonitrile Butadiene Styrene (ABS resin), UL 94 V-0 rated
Jack Contacts	Phosphor bronze plated with tin over nickel under plate. Gold on contact area.
PCB	FR4
IDC Terminals	Phosphor Bronze plated with matte tin over soft nickel underplate.
IDC Block	High impact Polycarbonate (PC resin), UL 94 V-0 rated, RoHS compliant.
Conductor Diameters	24 AWG – 22 AWG
Insulation Diameters	0.8mm – 1.0mm
Cable Diameters	5mm – 9mm

Electrical Characteristics

Voltage proof:	1000V DC or AC peak, contact-to-contact.
Current-carrying capacity:	0.75Amps minimum
Contact resistance:	20mohm maximum
Insulation resistance:	500Mohm minimum at 100V DC
Input to output resistance:	200mohm maximum
DC resistance:	0.2ohm maximum

Mechanical Characteristics

Mechanical operation	750 cycles min. for insertion / withdrawal with modular plug. 20 cycles min. for cable re-termination.
Effectiveness of connector coupling devices	50N (11lbf) for 60s ± 5s.

Environmental Characteristics

Temperature	-10°C ~ 60°C
Humidity	10% ~ 90%RH

ORDERING INFORMATION

PART NUMBER	DESCRIPTION
TL-JHC6S	Cat6 Shielded Keystone Jack