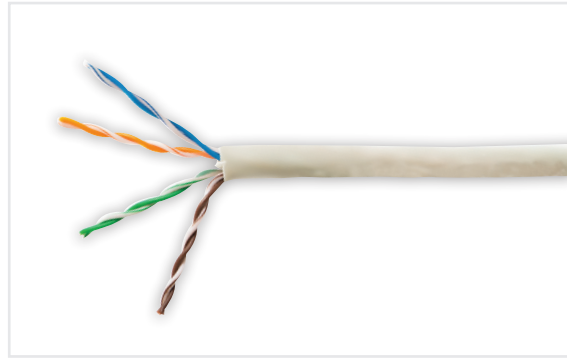
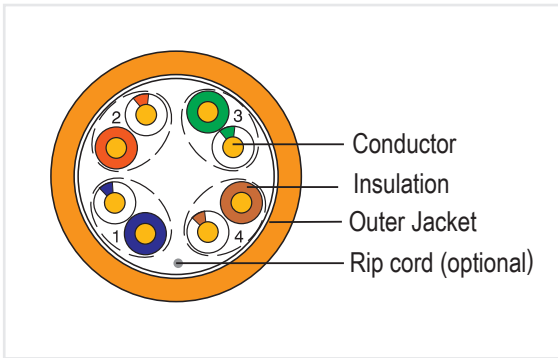


### Category 5e UTP Cable

Techlogiks Cat 5e unshielded solid cable in a 24 AWG conductor features more stringent specifications for crosstalk and system noise. The cable standard provides performance of up to 100 MHz and applies to 100 Base-T4, 100Base-TX, 100VG-AnyLAN, 1000Base-T, 1000Base-TX, 155Mbps ATM, 622Mbps ATM.



### Standards

UL Subject 444, EIA/TIA 568B.2-10 & ISO/IEC 11801, IEC 61156

Construction		
Structure	Construction	UTP
	Number of Pairs	4 Pair
	AWG	24AWG
	Conductor Dimension (mm)	0.50
	Solid or Stranded; Bare or Tinned	Solid Bare Copper
Insulation	insulation material	HDPE
	Insulation Dimension [mm]	0.88
	Number Colour (Ring or Strip marking)	1.White/Blue & Blue 2.White/Orange & Orange 3.White/Green & Green 4.White/Brown & Brown
Outer Jacket	Outer Jacket Material	PVC or LSZH
	Overall Nominal Diameter (mm)	24AWG UTP nom:4.8mm

Electrical Characteristics	
Nam. Mutual Capacitance @ kHz	≤5.6 nF/100M
Max. Capacitance unbalance (pF/ 100m)	≤330pF /100M(Per TIA/EIA-568B.2)
	≤160pF /100M(Per IEC 61156)
Nominal Velocity of Propagation	65%
Max. Delay Skew (ns/100m)	≤45ns/100M
Max. Conductor DC Resistance @ 20 Deg. C	9.38Ω /100M (24AWG)
Max. DC Resistance unbalance @ 20 Deg. C	≤5%(per TIA/EIA-568B.2)
	≤2%(per IEC 61156-5)



**Mechanical Characteristics**

Operating Temp. Range	-20~70°C
Max. Recommended Pulling Tension	110N
Min. Bend Radius (Install)	4 x O.D.
Flame Test	CMR

**TIA/EIA 568-B.2 Electrical Characteristics**

Frequency (MHz)	Input Impedance (Ohms)	Attenuation (dB/100m)	Return Loss (dB)	NEXT (dB)	PSNEXT (dB)	ELFEXT (dB/100m)	PSELFEXT (Db/100m)	PD (Ns/100m)
0.772	100±15	1.8	19.4	67.0	64.0	66.0	63.0	575.0
1	100±15	2.0	20.0	65.3	62.3	63.8	60.8	570.0
4	100±15	4.1	23.0	56.3	53.3	51.7	48.8	552.0
8	100±15	5.8	24.5	51.8	48.8	45.7	42.7	547.0
10	100±15	6.5	25.0	50.3	47.3	43.8	40.8	545.0
16	100±15	8.2	25.0	47.2	44.2	39.7	36.7	543.0
20	100±15	9.3	25.0	45.8	42.8	37.7	34.7	542.0
25	100±15	10.4	24.3	44.3	41.3	35.8	32.8	541.0
31.25	100±15	11.7	23.6	42.9	39.9	33.9	30.9	540.0
62.5	100±15	17.0	21.5	38.4	35.4	27.8	24.8	539.0
100	100±15	22.0	20.1	35.3	32.3	23.8	20.8	538.0

**ORDERING INFORMATION**

PART NUMBER	DESCRIPTION
TL-BULKUTPC5E	Unshielded Twisted Pair Category 5e Cable, 24 AWG, 305 Meters PVC
TL-BULKUTPC5ELZ	Unshielded Twisted Pair Category 5e Cable, 24 AWG, 305 Meters LSZH